

DORUB LIBYA SHOWROOM



📍 Tripoli

- Ras husayn: 0913073435
- Alkarimia : 0915021188
- Tajoura : 0916962525
- 20 ramadan: 0945099710

📍 Misrata

- Alkharuwba: 0915021155
- Althaqil : 0915020002

📍 Benghazi

- Ganfuda : 0916912525

H-100





Your dependable business partner.

You demand a lot from your truck and for good reasons:
Your customers expect the job to be on budget and on time.
So no matter how tough the conditions, the H-100 delivers 100
percent of the time.

Professional

Sleek and modern, the H100 is a real beauty. To light up the road ahead, clear-type headlamps light offer a choice of four modes including daytime running lights. But the H-100 is also a beast thanks to its powerful engine and ruggedly built ladder frame. When it comes to handling the bigger jobs, the H100 proves more than capable but it also takes on the smaller ones with marvellous efficiency.



Nice job

Purpose-built for the small business owner, the H-100 is a reliable and versatile performer that will help improve your bottom line. Designed to operate under the toughest of conditions, the H-100 is the confident choice of professionals.





Total control

Driving perfection begins with the perfect seat position and a new, heftier steering wheel. You get clear lines of sight in all directions made even better by the logical, intuitive layout of instruments and controls. The cabin is simply a masterpiece of intelligent design.



6 Speed manual transmission

Manufactured in-house, this gearbox features a new, more efficient design for optimal fuel economy and impressively quiet operation. The 254mm (~10in) diameter clutch delivers smooth, progressive take-up and superior durability.

01_Audio system

The optional audio system includes an AM/FM radio, CD/MP3 player, AUX-USB inputs and door mounted tweeters for optimal sound fidelity. All models are equipped with a pair of door-mounted speakers.

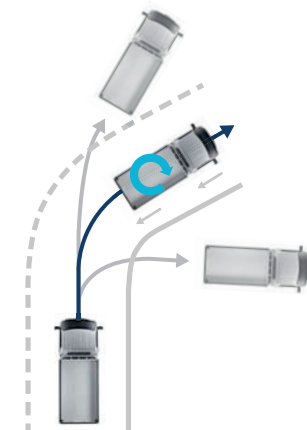
02_3.5" TFT LCD Cluster

The new digital center cluster is capable of serving up a wide range of useful information such as fuel economy, distance to empty and an oil change reminder. It is flanked by tachometer and speed gauges that are extra large and easy-to-ready, day or night.

03_Air conditioning system

Climate controls feature enhanced functionality courtesy of new, push button-type electric switches that deliver a much more precise feel. And they are backlit for easier nighttime operation.





Electronic stability control (ESC)

The optional Electronic Stability Control (ESC) helps you maintain directional control particularly when braking hard on slippery road surfaces.

01_2.5 CRDi diesel engine

The clean-running 2.5 diesel features dual overhead camshafts and a common rail diesel injectors and delivers 12.5PS @ 2,100rpm.

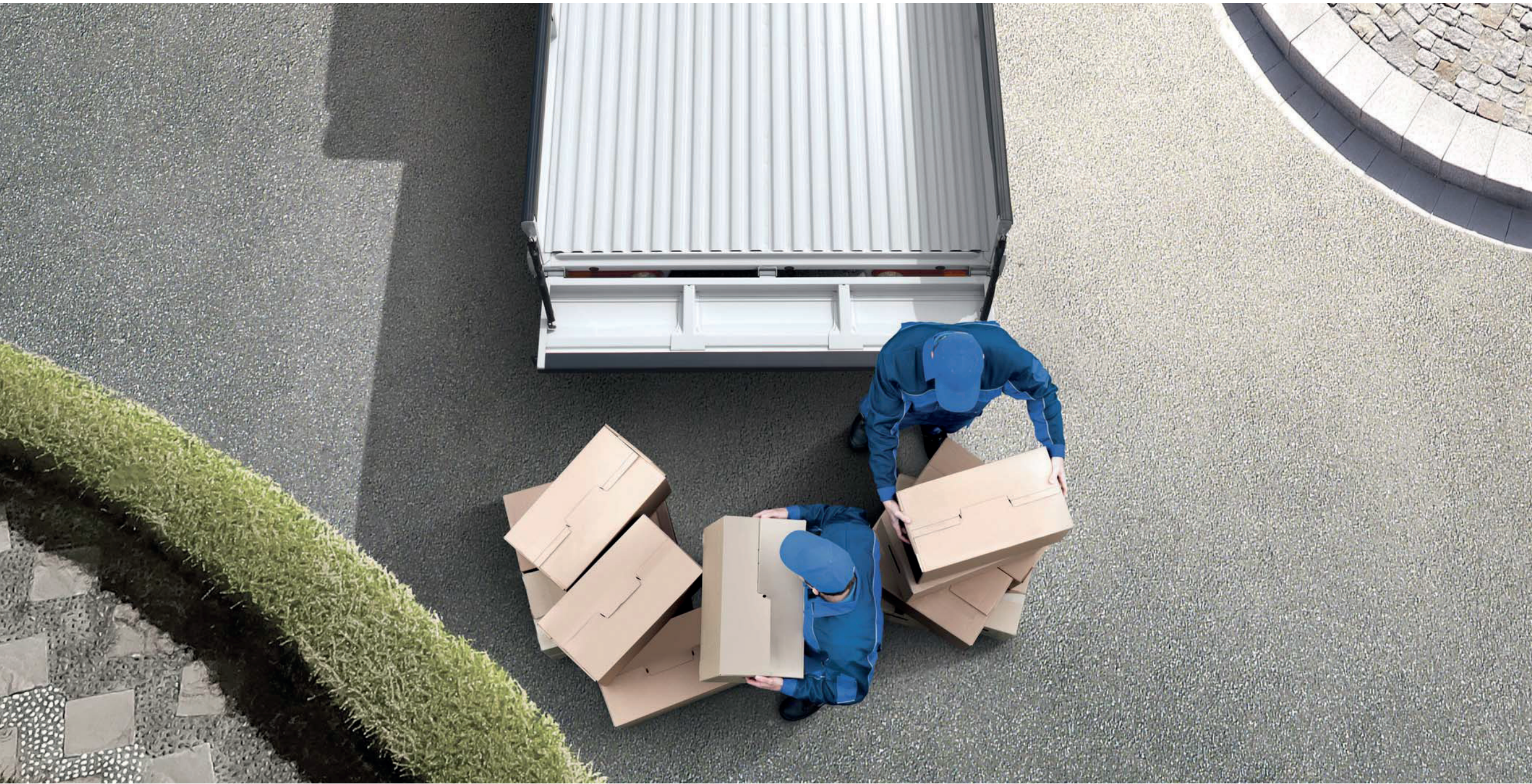
02_Emergency stop signal (ESS)

During emergency braking, ESS automatically flashes the brake lights 3 times and activates the hazard lights until you step off the brake pedal - providing a clear warning to drivers behind you and enhancing safety.

Depend on it

H-100 powertrains are tried and true. Day in and day out, these workhorses are designed to work around the clock, seven days a week with a minimum of preventive maintenance requirements. The H-100: a truck you can truly depend on.





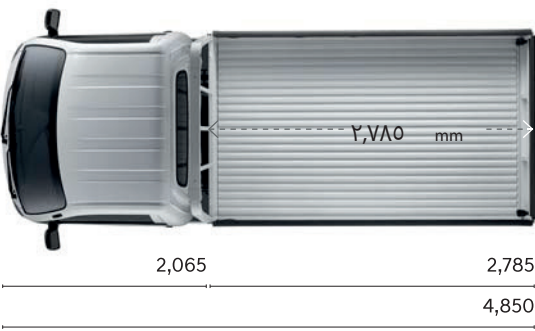
Right for the job

The H1-- helps you run your business more efficiently: The cargo bed is long so you can carry more on each trip-fewer trips means a healthier bottom line. And the low deck makes loading and unloading a little easier while helping reduce back strain.

Long wheel base standard cab

(Low type rear deck)

Unit : mm



Features

Hood

Power window controls

Side step

Maintenance free battery

AdBlue

Wide view outside mirror

Bottle storage & door map pocket

Glove box

Room lamp & sunglass holder

Colours

Exterior

Creamy White

Onyx Blue

Gray leather

Interior

Gray leather

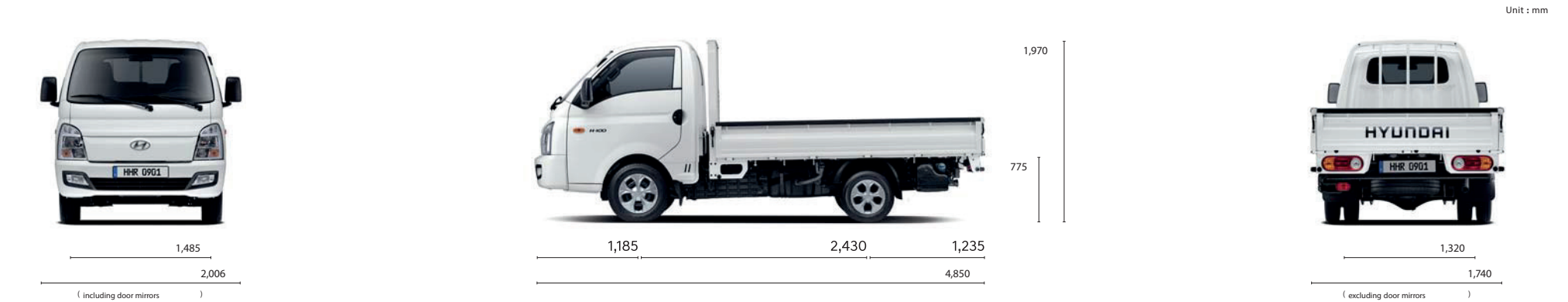
Wheels

15" Steel wheels

Specifications

Type			Low deck
Cab			Standard
Engine			2.5 diesel (CRDi)
Displacement (cc)			2,497
Bore x stroke (mm)			91 x 96
Compression ratio			15.8 : 1
Max.Power (PS / rpm)			130 / 3,600
Max.Torque (kg ·m / rpm)			26 / 1,250–3,500
Transmission	Type		Manual
			6-Speed
	Clutch	Type	Dry type with single friction plate
Wheel & tire	Wheel type		Steel
	Wheel size	Front	5.5J x 15 "
		Rear	4.0J x 13 "
	Tire size	Front	195 / 70R15C-8PR
		Rear	145R13C-8PR
	Spare tire		Full-size 2ea

- Some of the equipment illustrated or described in this catalog may not be supplied as standard equipment and may be available at extra cost.
- Hyundai Motor Company reserves the right to change specifications and equipment without prior notice.
- The colour plates shown may vary slightly from the actual colours due to the limitations of the printing process.
- Please consult your dealer for full information and availability on colours and trims.



* Above dimensions are based on standard cab long wheel base pictured here